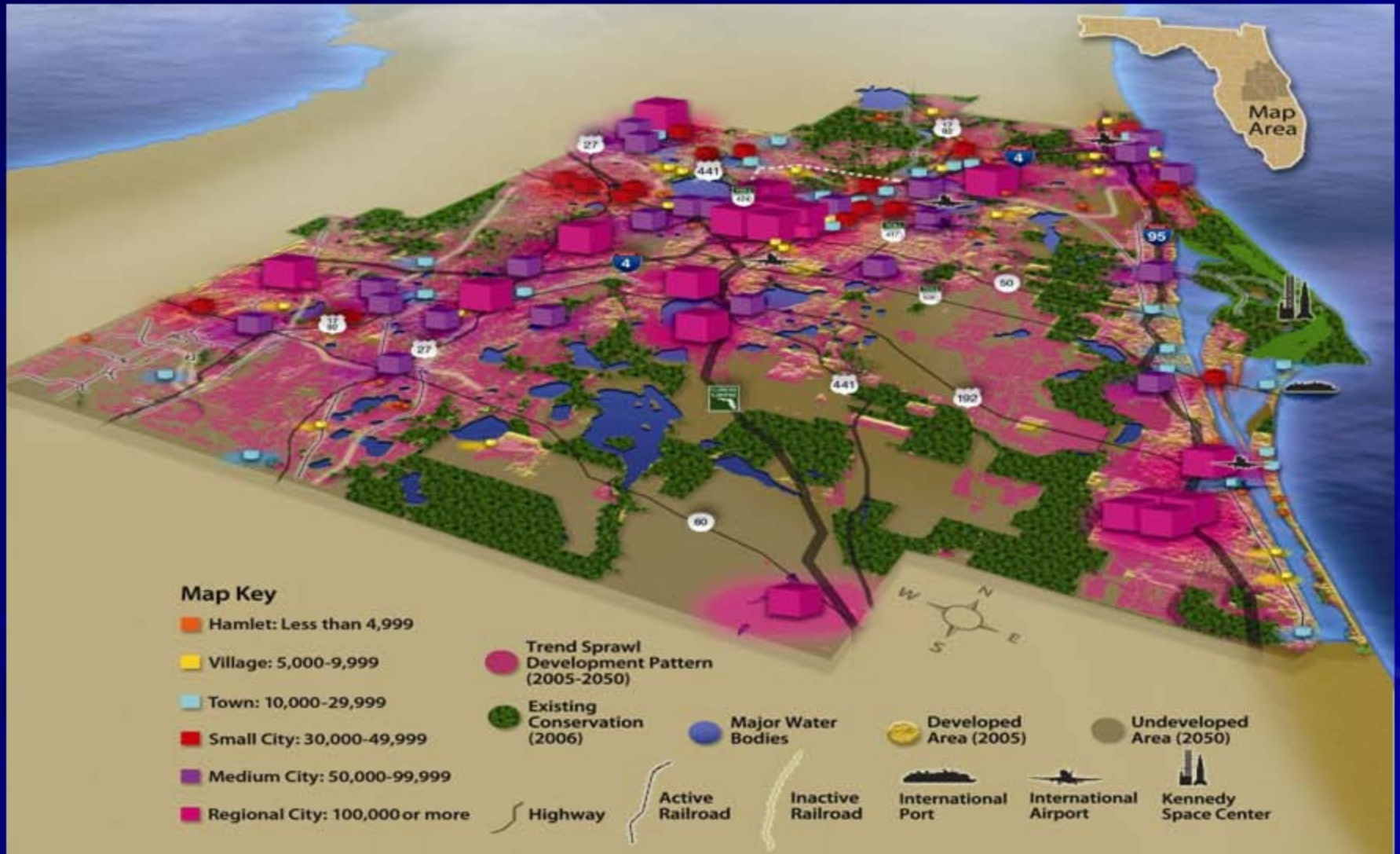


Osceola County Comprehensive Planning Framework

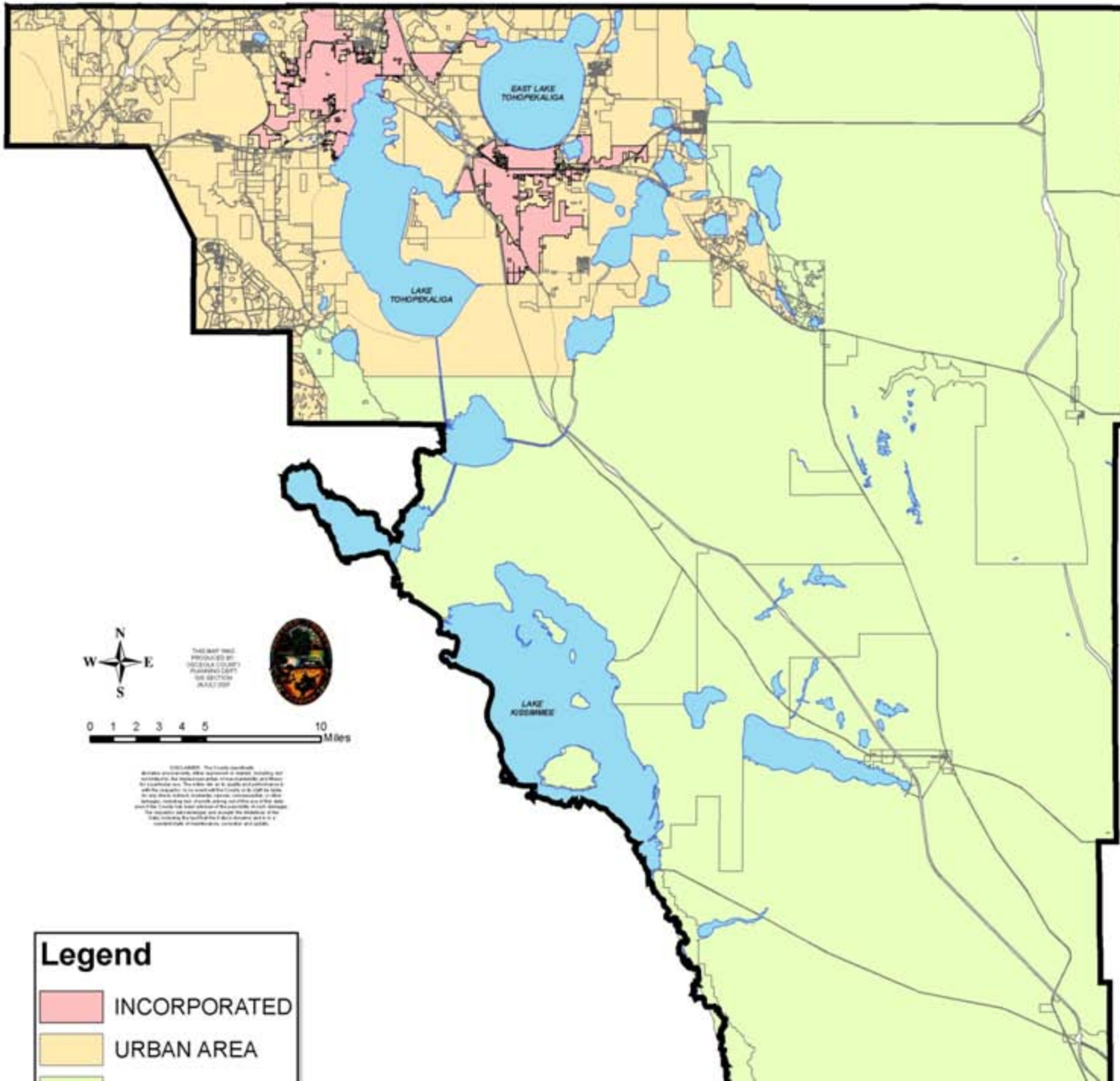
**Presentation to
Green Cities Florida Conference
May 20, 2009
by
Jeffrey Jones
Smart Growth Director**

Regional 2050 Trend



Regional 2050 Vision





THIS MAP WAS
 PROVIDED BY
 THE U.S. GEOLOGICAL SURVEY
 WASHINGTON, DC
 DATE: 05/20/2007



DISCLAIMER: The Toiyabe National Forest and National Monument, and the Toiyabe National Monument, are managed by the U.S. Department of the Interior, Bureau of Land Management. The information on this map is for informational purposes only and does not constitute a warranty of any kind. The U.S. Department of the Interior, Bureau of Land Management, is not responsible for any errors or omissions on this map. The information on this map is for informational purposes only and does not constitute a warranty of any kind. The U.S. Department of the Interior, Bureau of Land Management, is not responsible for any errors or omissions on this map.

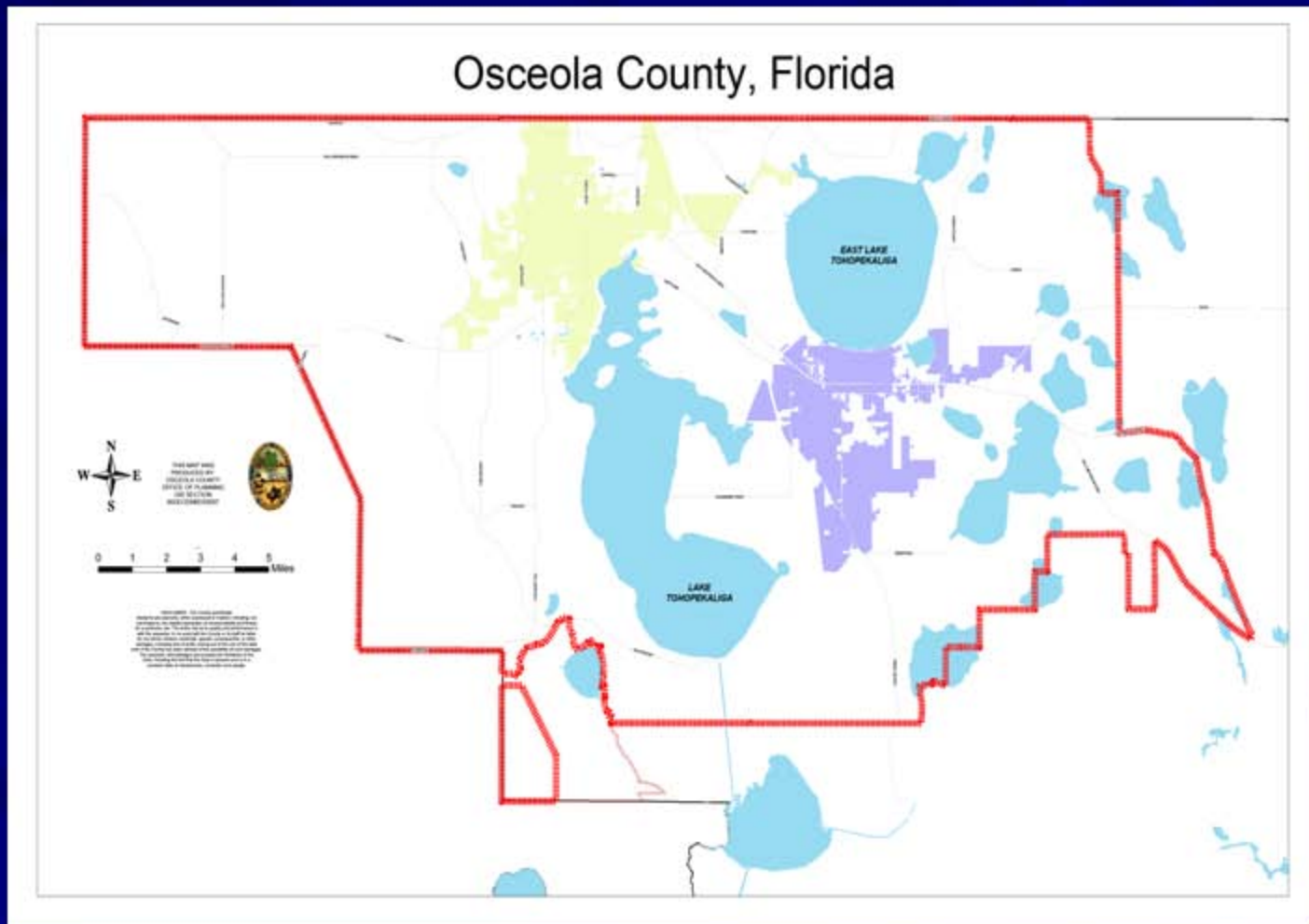
Legend

- INCORPORATED
- URBAN AREA

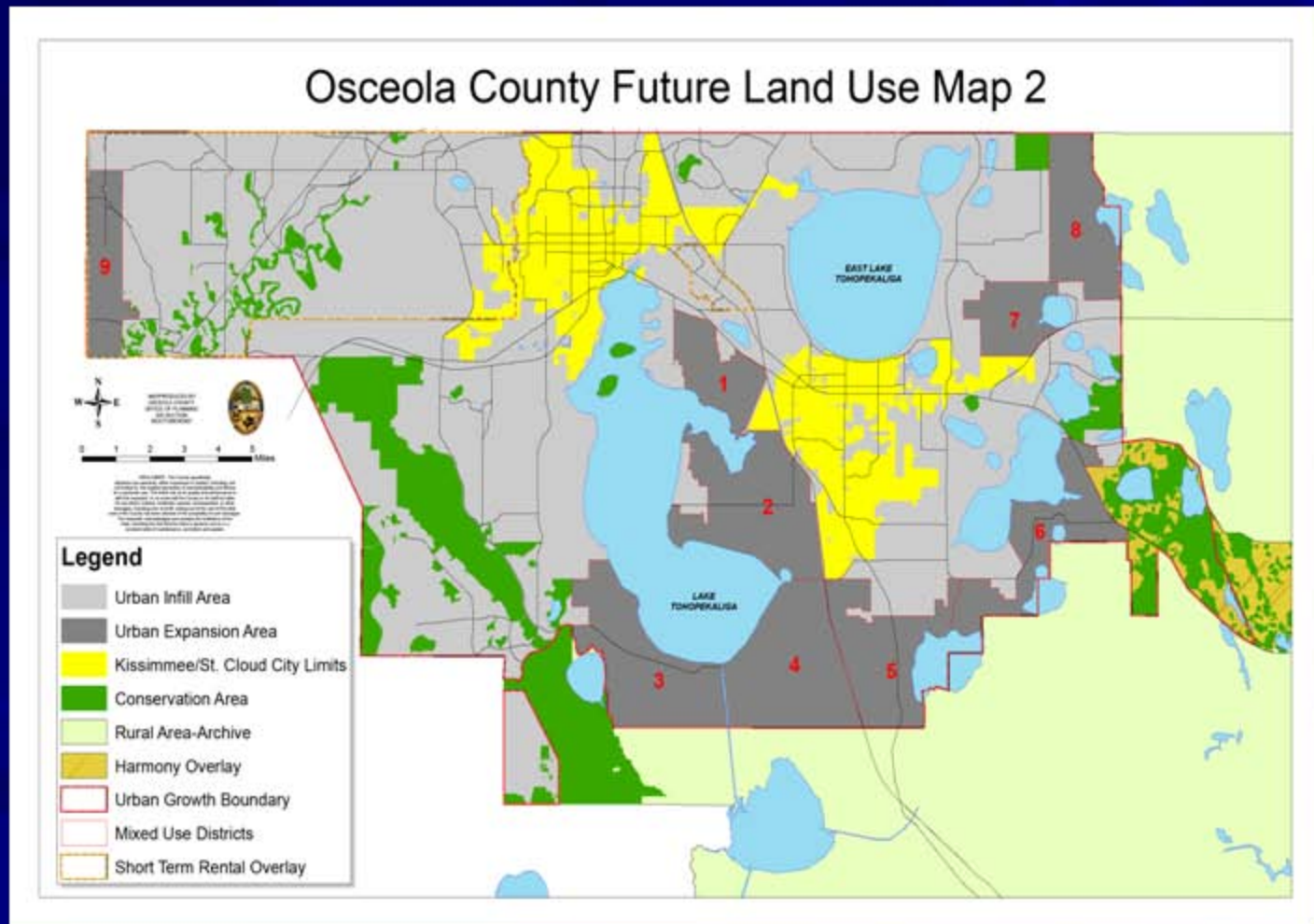
Comp Plan Objectives

- Direct 99% of Future Growth for year 2025 w/n NW area
- Achieve an average residential density of 3 dwelling units/acre
- Provide for efficient and cost effective infrastructure
- Allow higher level of public/private coordination
- Maintain 75% of County as Ag and Natural

Urban Growth Boundary



Urban Infill/Urban Expansion Areas



Smart Growth Strategies

- Encourage compact, efficient development pattern
- Promote mixed uses, and infill uses that includes pedestrian-friendly communities and neighborhoods
- Maximize use of infrastructure
- Promote diversity, affordability and choice in housing within greater proximity to work, schools and shopping
- Provide a balanced transportation system which will give residents options other than cars to travel to work, schools, shopping, recreation

Suburban Growth Urban Growth

- Low density, dispersed activities
- Single use, segregated land uses
- Automobile oriented
- Separation between uses
- Emphasis on private buildings
- Compact development
- Mixed land use
- Human scale
- Multi-modal oriented
- High connectivity
- Emphasis on public places

Arterial Development



Existing conditions: high speed center road with local serving side roads

Arterial Development



New sidewalks, one-way local access lane, parking lane, street lamps

Arterial Development



New infill development at sidewalks

Urban *Advantage*

Arterial Development



Street trees on far side

Arterial Development



Street trees on near medians

Arterial Development



Street trees on near side

Arterial Development



Increased street life

Arterial Development



Residential development alternative

South Lake Toho CMP



the end

